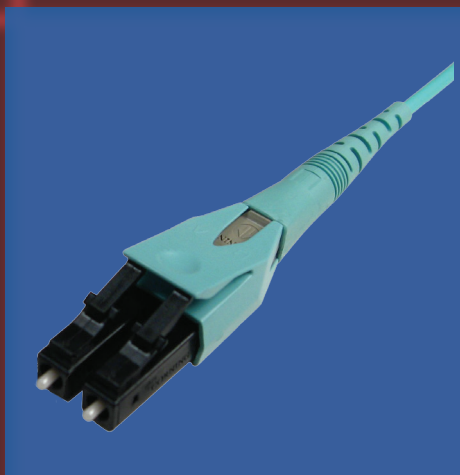
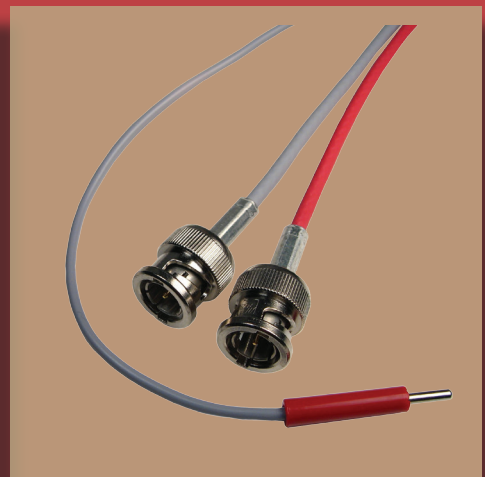
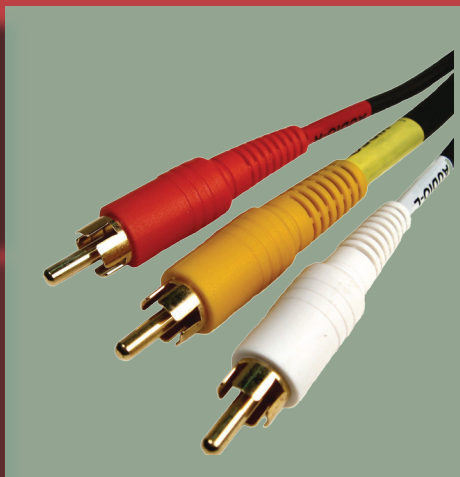


B.S. Cable
Company, Inc.

Catalog



Fiber Optic Assemblies

Modular & 110 Assemblies

Telco Assemblies

RF Cable Assemblies

A/V Assemblies & Electronics

USB & Firewire Assemblies

Power Cord Assemblies

D-Sub Serial Assemblies

1-800-204-0628
BSCable.com
sales@bscable.com

334 Godshall Dr.
Harleysville, PA 19438
Local: 215-513-4000
Fax: 215-513-4014

About Us

Our quality custom cable assemblies and the thousands of assemblies we keep on our shelves allow our customers a range of options to fit their specific needs.

BS Cable's manufacturing facility and office located in Harleysville, PA



BS Cable Company has a 31 year history of producing quality cable assemblies and top notch customer service. A lot of people ask about our name... **B**arbara Bulen and **S**ue Gorman started BSC in 1984 in their garage.

Since then, we have grown to be one of the leading quality assembly houses on the East Coast. We presently employ over 75 people in our 10,000 sq. ft. production facility located in the heart of Harleysville, PA. We are confident that we will continue to grow due to our commitment to providing top notch customer service and the exceptional quality control of all the custom assemblies we build. Having strong relationships with the industry distributors provides confidence in our product and business practices. Our fiber manufacturing process is audited by Corning annually as part of the Gold House program. In addition to the Corning QC, we are also ISO certified. All of these factors make your business at BS Cable easy, cost-effective, and reliable.

• *Relentless Until A Solution Is Found* •

Contents

Fiber Optic Assemblies 1

Modular & 110 Assemblies 2

Telco Assemblies 3

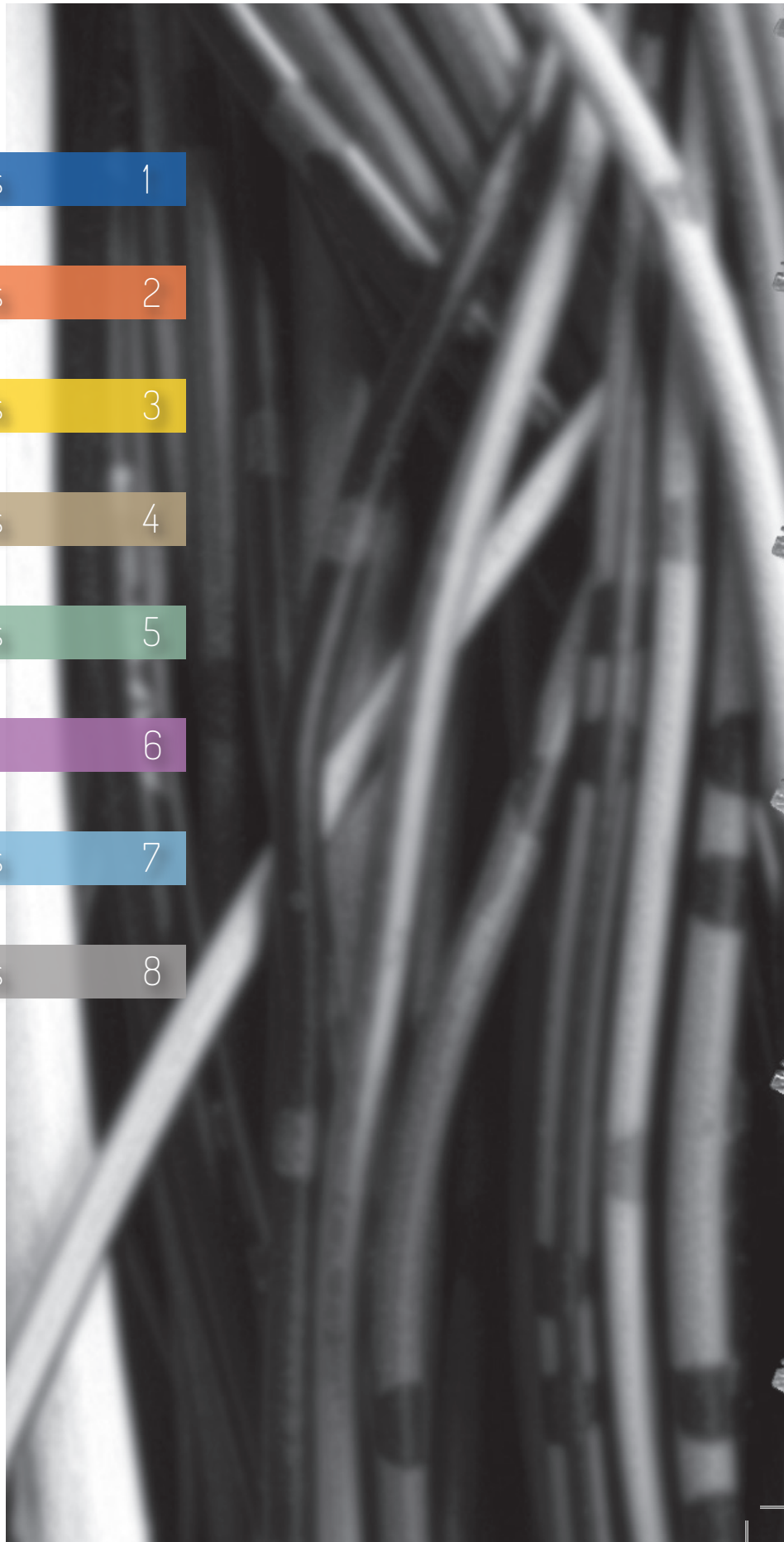
RF Cable Assemblies 4

A/V Assemblies & Electronics 5

USB & Firewire Assemblies 6

Power Cord Assemblies 7

D-Sub Serial Assemblies 8



Certifications

BS Cable has multiple certifications to ensure your business with us is easy, cost-effective, and reliable.



The Corning Cable Systems CAH Connections Gold Program represents the highest standard for manufacturers of optical patch cords. By having a proven track record of manufacturing and business excellence, BS Cable has been a Corning Gold partner since 2006.



BS Cable has been ISO 9001 certified since 2001. The most widely recognized standard is the ISO 9000 series; a basic quality management system that can be used in industries of any size, anywhere in the world. Registration to ISO 9001:2008 provides objective proof that a business has implemented an effective quality management system, and that it satisfies all of the requirements of the applicable standard.



The Women's Business Enterprise National Council (WBENC) provides the most widely recognized and respected certification in the United States for women's business enterprises (WBE). At BS Cable we strive to support local and Women owned small businesses.



Sue Gorman, the owner of BS Cable, proudly served our country before the company's inception. Our veteran owned status allows us to be competitive in the government marketplace and is a useful tool to many of our clients.

• *Relentless Until A Solution Is Found* •

Fiber Optic Assemblies

Whether you are looking for a high end Corning Gold assembly or a cost effective off-shore assembly, BS Cable has you covered. We carry three different lines of cords:

- C Series: Corning Gold
- T Series: TAA Compliant
- E Series: Economy-Light Line

-
- Terminations are fully tested for insertion loss and are not passed unless they meet or exceed specifications set by the manufacturer
 - All terminations are meticulously polished and inspected
 - Custom multi-fiber stagger lengths and pulling eye sizes to fit through desired space requirements.
 - Option to run multi-fiber through duct to save time
 - Ability to send or save test results digitally upon request



C Series: Corning Gold Assemblies

Only an elite group of cable assembly houses (CAHs) meet the high production and quality standards required to be eligible for this program. BSC being one of the first gold houses, has demonstrated over a period of many years, a proven track record of manufacturing and business excellence. Because of this, Corning Cable Systems can extend its 25-year Network of Preferred Installers Program (NPI) coverage to include single and 2-fiber patch cords manufactured by BSC for any project installed.

Options based on availability and compatibility:

Connector End A	Connector End B	Cable	Jacket
ST	ST	Duplex 2mm	PVC
SC	SC	Duplex 3mm	Plenum
FC	FC	Simplex 2mm	
LC	LC	Simplex 3mm	
SC APC	SC APC	Ribbon	
FC APC	FC APC	2mm DFX Style (Uniboot Only)	
LC APC	LC APC		
Narrow Pitch LC	Narrow Pitch LC		
MTRJ Pinned (Male)	MTRJ Pinned (Male)		
MTRJ Unpinned (Female)	MTRJ Unpinned (Female)		
Uniboot	Uniboot		
	No Connector		

Part Numbers: Please call for part numbers



MTRJ UPC Singlemode Pinned



FC Multimode 62.5/0m2



FC APC Singlemode



MTRJ UPC Singlemode Unpinned



FC UPC Singlemode



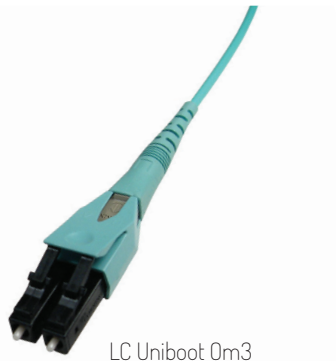
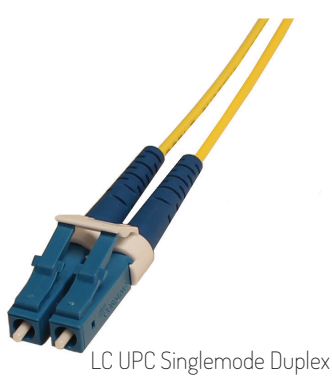
ST UPC Singlemode



The Corning Cable Systems CAH Connections Gold Program represents the highest standard for manufacturers of optical patch cords



Fiber Count	Mode	Manufacturer	Additional Options
1 Fiber	8.3/125 Singlemode	Corning	Reel
2 Fiber	62.5/125 Multimode - Om 1		Pulling-Eye
	50/125 Multimode - Om 2		Can be run through inner-duct
	50/125 Multimode - Om 3		
	50/125 Multimode - Om 4		



T Series: TAA Compliant Fiber Jumpers

BS Cable manufactures these generic fiber jumpers here in our 10,000 sq. ft. facility. Each assembly ships with certified test results.

Options based on availability and compatibility:

Connector End A	Connector End B	Cable	Jacket	Fiber Count
ST	ST	Simplex 2mm	PVC	1 Fiber
SC	SC	Simplex 3mm	Plenum	2 Fiber
FC	FC	Duplex 2mm		
LC	LC	Duplex 3mm		
SC APC	SC APC			
FC APC	FC APC			
LC APC	LC APC			
Narrow Pitch LC	Narrow Pitch LC			
MTRJ Pinned (Male)	MTRJ Pinned (Male)			
MTRJ Unpinned (Female)	MTRJ Unpinned (Female)			
	No Connector			

Mode	Fiber Manufacturer	Connector Manufacturer	Additional Options
8.3/125 Singlemode	TLC	Senko	Reel
62.5/125 Multimode - Om 1	Berk-Tek	AFOP	Pulling-Eye
50/125 Multimode - Om 2	AFL		Can be run through inner duct
50/125 Multimode - Om 3	Hitachi		
50/125 Multimode - Om 4			

Jacket colors based on availability and compatibility:



Part Numbers: Please call for part numbers



LC Duplex Singlemode UPC



LC Duplex Om3



LC Duplex Multimode



SC Duplex Multimode



SC Duplex Singlemode UPC



SC Duplex Om3

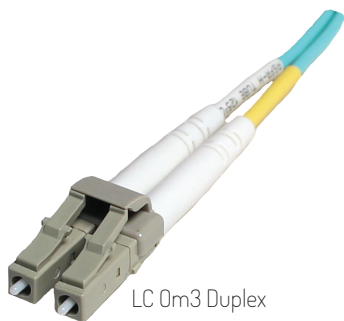
E Series: Economy-Light Line

Each jumper comes bagged with test results and is 100% ROHS compliant. Our ISO certified QC department diligently batch tests our stock to ensure you are getting a product you can count on. All stock items ship same day with no drop ship fees or minimum order quantities.

Options based on availability and compatibility:

Connector End A	Connector End B	Cable	Jacket	Mode
ST	ST	Duplex 2mm	PVC	8.3/125 Singlemode
SC	SC	Simplex 2mm	Plenum	62.5/125 Multimode - Om 1
FC	FC			50/125 Multimode - Om 2
LC	LC			50/125 Multimode - Om 3
SC APC	SC APC			50/125 Multimode - Om 4
FC APC	FC APC			
LC APC	LC APC			
	No Connector			

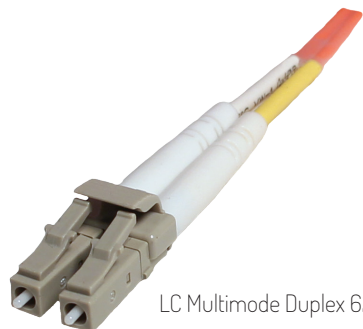
Part Numbers: Please call for part numbers



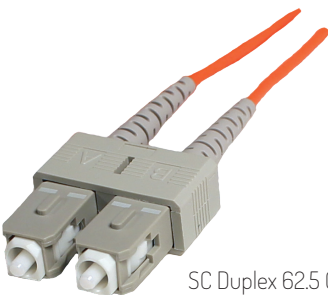
LC Om3 Duplex



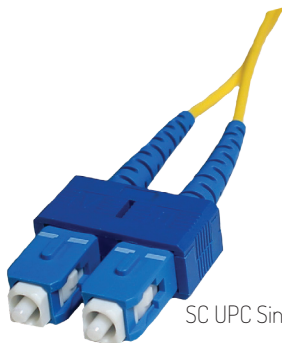
LC UPC Singlemode Duplex



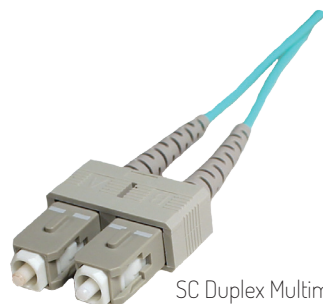
LC Multimode Duplex 62.5 Om1



SC Duplex 62.5 Om1



SC UPC Singlemode Duplex



SC Duplex Multimode Om3

Custom Multi-Fiber Trunk Assemblies

BS Cable has been producing custom multi-fiber assemblies for over 30 years right here in Pennsylvania. We set ourselves apart in this product line with superior, consistent quality and our ability to grasp the customer's needs on every order regardless of quantity.

Value added options:

- Ability to run fiber through inner duct
- Custom staggering options to fit through tight conduits or spaces
- Test results are saved and shipped for all assemblies

Options based on availability and compatibility:

Connector End A	Connector End B	Cable	Jacket	Fiber Count
ST	ST	Indoor Tight Buffered (900um)	PVC	1 Fiber-144 Fiber
SC	SC	Indoor/Outdoor Tight Buffered (900um)	Plenum	
FC	FC	Indoor/Outdoor Loose Tube (250um)		
LC	LC	Indoor Micro Distribution (250um)		
SC APC	SC APC	Indoor Armored		
FC APC	FC APC	Armored Outside Plant		
LC APC	LC APC	Figure 8 Aerial		
Narrow Pitch LC	Narrow Pitch LC	Ribbon		
	No Connector			

Part Numbers: Please call for part numbers



LC UPC Singlemode



LC Multimode 62.5



ST UPC Singlemode



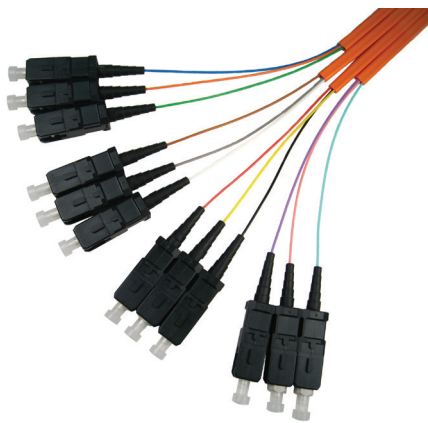
LC APC Singlemode



LC Multimode Om3



ST Multimode 62.5



Mode	Manufacturer	Additional Options
8.3/125 Singlemode	Corning	Reel
62.5/125 Multimode - Om 1	TLC: The Light Connection	Pulling-Eye
50/125 Multimode - Om 2	Commscope	Furcated Breakout (2mm or 3mm)
50/125 Multimode - Om 3	Hitachi	Breakout staggered to fit customers duct/conduit
50/125 Multimode - Om 4	AFL	
	Mohawk	
	General	
	OCC: Optical Cable Company	
	Berk-Tek	



SC Singlemode



SC APC Singlemode



FC UPC Singlemode



ST Multimode Om3



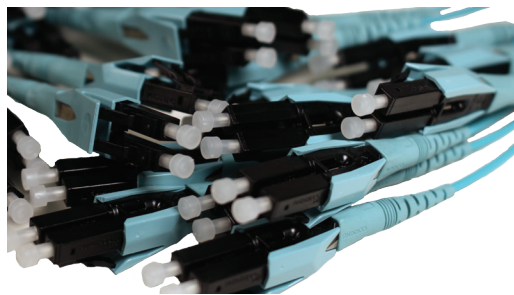
SC Multimode



FC APC Singlemode

Uniboot Fiber Assemblies

The LC Uniboot design utilizes a 2-fiber, 250um, 2.0mm round jacket which is half the size of a standard duplex zip-cord.



- The LC Uniboot is offered in:
 - 50/125 OM3
 - 50/125 OM4
 - Singlemode
- Custom lengths and labeling available
- All assemblies ship with certified test results
- Covered by Corning for 25 years under the CAH Gold House Program



- Polarity can be changed in the field effortlessly
- Robust yet compact design
- Available only from Corning and CAH Gold Houses
- Reduced cordage size allowing for higher density solutions with better air flow

Fiber Pigtails

Just like our jumpers these come in three different product lines. T Series: TAA Compliant Fiber Jumpers, E Series: Economy-Light Line, and A Series: All Corning Material

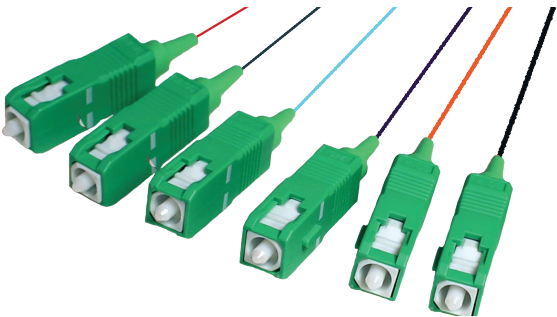


Options based on availability and compatibility:

Connector End A	Cable	Fiber Count	Jacket
ST	Simplex 900um Non-jacketed	1 Fiber - 12 Fiber	PVC
SC	6 Fiber Jacketed		Plenum
FC	6 Fiber Non-Jacketed		
LC	12 Fiber Jacketed		
SC APC	12 Fiber Non-Jacketed		
FC APC			
LC APC			

Mode	Cable Manufacturer
8.3/125 Singlemode	Corning
62.5/125 Multimode - 0m 1	TLC
50/125 Multimode - 0m 2	
50/125 Multimode - 0m 3	
50/125 Multimode - 0m 4	

Part Numbers: Please call for part numbers



MTP Assemblies

The MPO/MTP has revolutionized the fiber industry by utilizing 12 channels in one connector. It is smaller than most duplex connections, reduces bulk cordage, and increases installation speed.

What is the difference between MPO and MTP connectors?

MPO is the official industry name of the connector, defined by two IEC standards. It can be manufactured by anybody to varying degrees of quality. On the other end of the spectrum, the MTP connector is a high performance MPO connector with multiple engineered product enhancements to improve optical and mechanical performance. It is patented and therefore only produced by US CONEC.

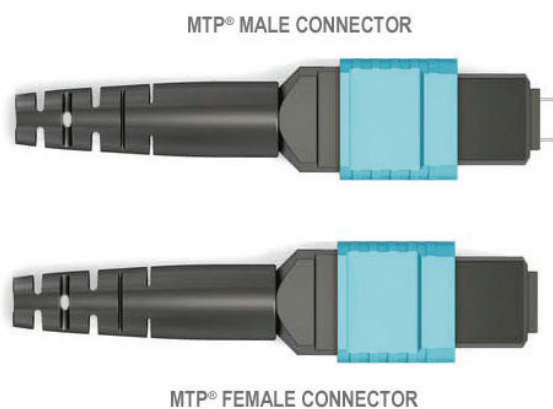
BSC only uses MTP connectors when producing these assemblies. We offer custom lengths and configurations to suit your customer's needs. Our seasoned sales executives can help you to determine the polarity needed for your system, a detail often overlooked or miscommunicated when it comes to these assembly types.



Options based on availability and compatibility:

Connector End 1	Connector End 2	Fiber Count	Jacket	Armor Option
Male (Pinned)	Male (Pinned)	12 Fiber - 144 Fiber	PVC	Armored
Female (Unpinned)	Female (Unpinned)		Plenum	Non-Armored
Cable Style	Mode	Cable Manufacturer	Polarity	
Micro-Distribution	8.3/125 Singlemode	Corning	A: Flipped	
Ribbon	62.5/125 Multimode - Om 1	TLC	B: Universal	
	50/125 Multimode - Om 2	Hitachi	C: Pair-Wise Flip	
	50/125 Multimode - Om 3	AFL		
	50/125 Multimode - Om 4			

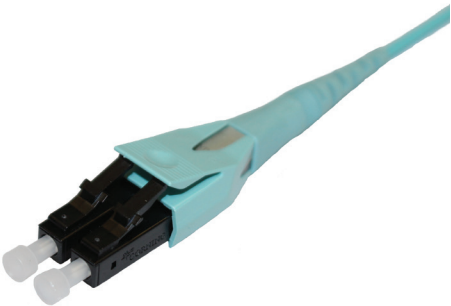
Part Numbers: Please call for part numbers



MTP connectors come either pinned (Male) or unpinned (Female)

MTP (QSFP) to LC (SFP) Harness for 40g

These MTP/LC assemblies are used in 40GBE applications. They use 8 of 12 positions on the MTP and 4 duplex LC's to provide 40g parallel transmission. The Corning LC Uniboot allows for on-site polarity changes reducing the risk of installation delays or errors during new device installation. Just like our trunk cables, these are made with only US CONEC type MTP connectors.

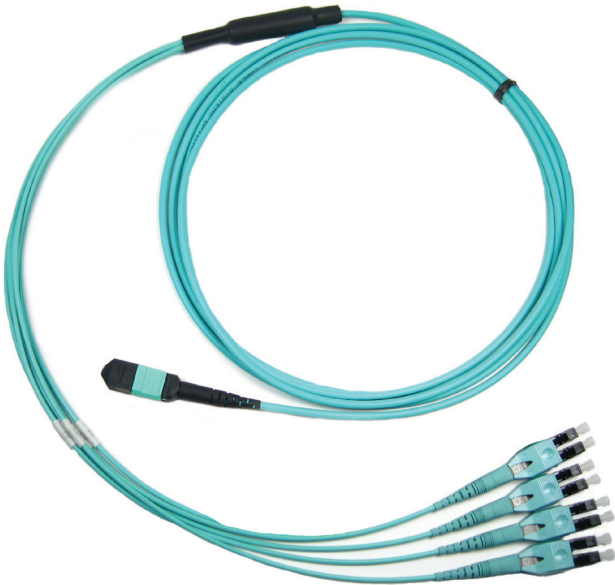


Options based on availability and compatibility:

Connector End 1	Connector End 2	Fiber Count	Jacket	Cable Style
Male (Pinned)	LC Uniboot Style	12 Fiber - 144 Fiber	PVC	Micro Distribution
Female (Unpinned)	Standard Duplex LC		Plenum	
	Simplex LC			

Mode	Cable Manufacturer	Polarity	Breakout Length
8.3/125 Singlemode	Corning	A: Flipped	12-36 inches
50/125 Multimode - Om 3	TLC	B: Straight Through	
50/125 Multimode - Om 4	Hitachi		
	AFL		

Part Numbers: Please call for part numbers



Mode Conditioning Patch Cables

Mode conditioning patch cords are duplex assemblies that utilize one singlemode leg and three multimode legs. They are used to adapt the single mode output of Gigabit Ethernet transceivers to a multimode network. These cables require two cores of two different sizes to be fusion spliced together. For this to work properly, the splice must be offset, so that the two cores align together properly.

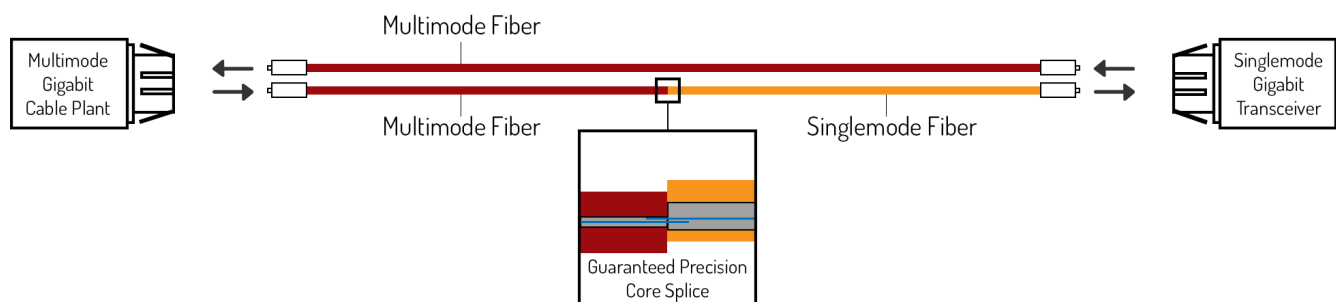
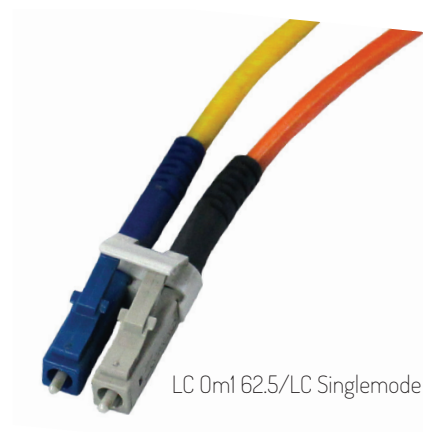
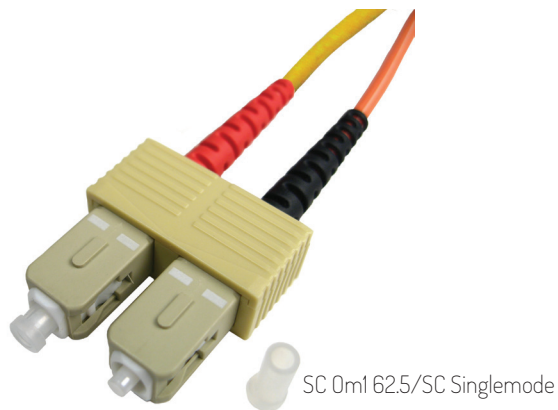
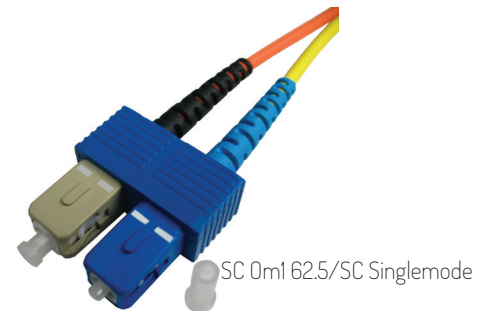
Precision off-set core splicing

Individually bagged with test results

Options based on availability and compatibility:

Connector End 1	Connector End 2	Multimode Option
SC	SC	0m 1
LC	LC	0m 2
ST	ST	0m 3
FC	FC	0m 4
*One Leg Singlemode		

Part Numbers: Please call for part numbers



OTDR Dead Zone Eliminating Launch Boxes

The Launch Box is a Dead Zone Eliminator that can be attached to the launch and/or receive terminals of an OTDR test set to allow accurate measurement of the first and last connector in the cable plant. The Dead Zone Eliminator is a suitable length of fiber that allows the large UPC reflection at the OTDR interface to decay naturally while providing the natural fiber attenuation slope required for an accurate measurement.

Features:

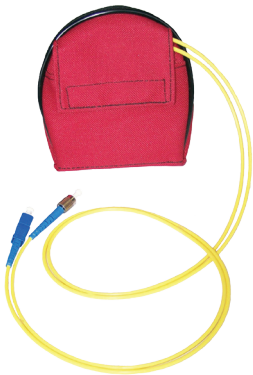
- Cases To Protect and Manage Fiber
- Insertion and Return Loss Tested
- Serialized and Individual Test Records
- Guaranteed Zero Defects

Options:	Style	Mode	Length in Meters	Connector
	Soft Pouch	8.3/125 Singlemode	Custom length	FC/UPC
	Pelican Case	62.5/125 Multimode - 0m 1		FC/APC
		50/125 Multimode - 0m 2		ST/PC
		50/125 Multimode - 0m 3		LC/UPC
		50/125 Multimode - 0m 4		LC/APC
				SC/UPC
				SC/APC

Part Numbers: Please call for part numbers



Pelican Case



Zippered Soft Pouch

Simplex Drop Cable Low Smoke Halogen

These simplex drop cables are heavily used in the FTTH industry to connect the final link of the optical network to the home or office.

Options:	Strand Count	Mode	Connector	Type
	Simplex	8.3/125 Singlemode	SC APC	Figure 8 (Metal)
	Duplex			Standard

Part Numbers: Please call for part numbers



Outdoor 2 Fiber Low Smoke Halogen Armored Breakout

These specialty outdoor 2 fiber assemblies feature a mesh armor type breakout and a robust 7mm UV rated outdoor jacket that is LSZH rated. A great solution for outdoor and industrial uses.

Options:	Operating Temp.	Mode	Connector
	-40°c to 85°c	8.3/125 Singlemode	SC UPC
			LC UPC
			SC APC

Part Numbers: Please call for part numbers



Plastic Optical Fiber Cables

These series of plastic fiber optic cables are constructed of a single step index fiber, sheathed in a black polyethylene jacket. The duplex fiber consists of two simplex fibers joined with a zip cord web. These cables are ROHS compliant.

Applications:

- Industrial data links for factory automation and plant telecommunications switching systems
- Computer-to-peripheral data links
- Power electronics
- Gaming equipment
- Data communications



Options:

Cable Style	Mode	Connector
Standard Attenuation POF	8.3/125 Singlemode	Standard Simplex
Extra Low Loss POF	62.5/125 Multimode - Om 1	Latching Simplex
	50/125 Multimode - Om 2	Standard Duplex
	50/125 Multimode - Om 3	Latching Duplex
	50/125 Multimode - Om 4	No Connector

Part Numbers: Please call for part numbers

Ruggedized Compact Fanout Kit

These kits allow for a robust, protected breakout even when using loose-tube type cable. They are a cost effective, time saving solution with a compact design that provides more protection than a 900um breakout.

Applications:

- Telecommunications
- LAN
- Data center
- Broadcast
- Enterprise



Options:

Mode	Connector	Fanout Tubing Size	Breakout
8.3/125 Singlemode	LC	12 x 2.0mm	Staggered
62.5/125 Multimode - Om 1	SC	6 x 3mm	Non-Staggered
50/125 Multimode - Om 2	FC		
50/125 Multimode - Om 3	ST		
50/125 Multimode - Om 4			

Part Numbers: Please call for part numbers



Modular & 110 Assemblies

In today's cable assembly market, many "cost-effective" vendors are cutting corners by two methods; using non-UL approved cable and using what is called CCA - Copper Clad Aluminum conductors. Compared to pure copper, CCA is brittle, has higher DC resistance, and is prone to oxidation, all of which can cause intermittent connections which ultimately leads to wasted time troubleshooting and probable network down-time.

BS Cable guarantees all of the twisted pair we use is UL approved and is Non-CCA. In addition, all cords built at BS Cable are:

- TAA Compliant
- 100% Tested for Continuity
- Batch tested to Category Cable "patch cord" standards

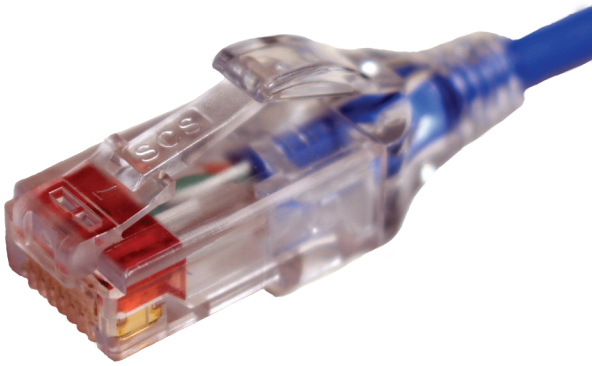
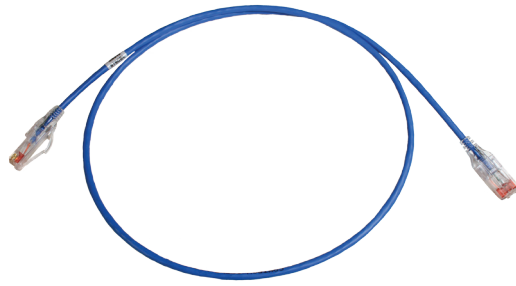
We also have the ability to:

- Custom serial #'s or bar code label
- Send or save test results digitally

2



28 AWG Cat6 Patch Cords



Save space with
BS Cable's new 28awg
Category 6 Patch Cords.

These offer various advantages to the end user such as:

- Increased air flow
- 30% diameter reduction vs standard Cat6
- Easier and more compact routing
- Smaller bend radius vs. standard Cat6

Made in the USA and 100% tested before shipping, you can order these cables in custom lengths and colors.



TAA Compliant Patch Cords Made in the U.S.

Cat5e 350Mhz Patch Cords

These 350Mhz Cat5e cords are built here at BSC with UL/TAA compliant cable and are guaranteed to meet or exceed TIA/EIA Cat5e specifications.

Printed patch cord test results available upon request

Custom Labeling - From bar codes to serialization, we have you covered

Custom Lengths - With these cords, you can order any footage you require to keep your cabinets clean and aesthetically pleasing



Gray, Non-Shielded, Non-Booted



Black, Non-Shielded, Booted

Options:

Cable Style

Stranded
Shielded
Solid

Strain Relief

Booted
Non-Booted

Jacket Options

PVC
Plenum
OSP
LSZH

Cable Manufacturer

Berktek
Belden
Commscope
Essex
Hitachi
Mohawk
Quabbin
Generic

Wiring

568B
568A/B (Crossover)
Rollover

RJ45 Manufacturer

Panduit
Sentinel
Stewart
Generic

Jacket colors based on availability and compatibility:



Part Numbers: Please call for part numbers

Cat6 550Mhz Patch Cords

These 550Mhz Cat6 cords are built here at BS Cable with UL/TAA compliant cable and are guaranteed to meet or exceed TIA/EIA Cat6 specifications.

Printed patch cord test results available upon request

Custom Labeling - From bar codes to serialization, we have you covered

Custom Lengths - With these cords, you can order any footage you require to keep your cabinets clean and aesthetically pleasing



Cat6 (Non-Shielded) Slim Boot



Cat6 (Non-Shielded) Panduit

Options:

Cable Style

Stranded
Shielded
Solid

Strain Relief

Booted
Non-Booted

Jacket Options

PVC
Plenum
OSP
LSZH

Cable Manufacturer

Berktek
Belden
Commscope
Essex
Hitachi
Mohawk
Quabbin
Generic

Wiring

568B
568A/B (Crossover)
Rollover

RJ45 Manufacturer

Panduit
Sentinel
Stewart
Generic

Jacket colors based on availability and compatibility:



Part Numbers: Please call for part numbers

Cat6A 600Mhz Patch Cords

These 600Mhz Cat6A cords are built here at BS Cable with UL compliant cable and are guaranteed to meet or exceed TIA/EIA Cat6A specifications.

Printed patch cord test results available upon request

Custom Labeling - From bar codes to serialization, we have you covered

Custom Lengths - With these cords, you can order any footage you require to keep your cabinets clean and aesthetically pleasing



Cat6a (Shielded) Bubble Boot



Cat6a UTP RJ45 Booted

Options:

Cable Style

Stranded
Shielded
Solid

Strain Relief

Booted
Non-Booted

Jacket Options

PVC
Plenum
OSP
LSZH

Cable Manufacturer

Berktek
Belden
Commscope
Essex
Hitachi
Mohawk
Quabbin
Generic

Wiring

568B
568A/B (Crossover)
Rollover

RJ45 Manufacturer

Panduit
Sentinel
Stewart
Generic

Jacket colors based on availability and compatibility:



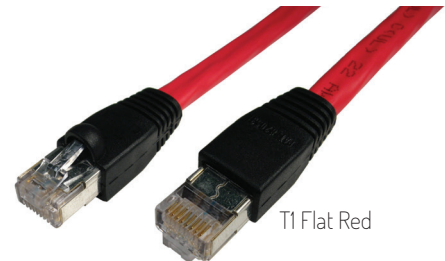
GY BK BL GR OR PK VI RD YW WH

Part Numbers: Please call for part numbers

T1 Assemblies

T1 (sometimes called DS1) cable uses two individually shielded twisted pairs with an overall shield. These cables are rated at 100ohm and guaranteed to meet or exceed TIA/EIA specifications.

Custom lengths made to order



T1 Flat Red

Options:

Cable Style

Round
Flat

Jacket Color

Gray (Round)
Red (Flat)
Red (Round)

Pinout

Straight
Crossed

Jacket Rating

PVC (Flat)
PVC (Round)
Plenum (Round)

AWG

24 AWG (Round Only)
22 AWG (Flat Only)

Part Numbers: Please call for part numbers

Non-TAA Compliant Patch Cords

Even though these cords have become a commodity in this marketplace, BS Cable does not sacrifice quality for price. We have rigorously vetted their quality and continue to do so when receiving every order. These are guaranteed to have pure copper conductors and are perfect when you need a cost effective cord in a hurry.

Cat5e 350Mhz Patch Cords



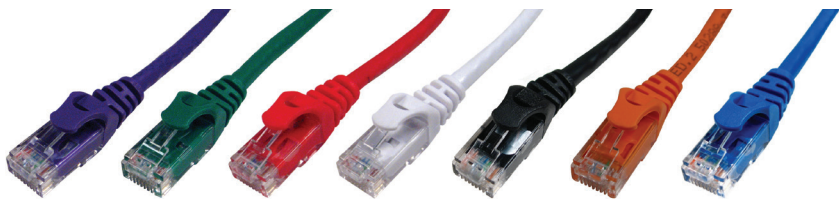
Stock Lengths in ft.: 1, 2, 3, 5, 7, 10, 14, 15, 20, 25, 50, 75, & 100

Jacket colors based on availability and compatibility:

GY	BK	BL	GR	OR	PK	VI	RD	YW	WH

Part Numbers: Non-Booted 8-1818ST6-YY-XXX
Booted 8-1825ST6-YY-XXX
"YY" represents your color preference

Cat6 550Mhz Patch Cords



Stock Lengths in ft.: 1, 2, 3, 5, 7, 10, 14, 15, 20, 25, 50, 75, & 100

Jacket colors based on availability and compatibility:

GY	BK	BL	GR	OR	PK	VI	RD	YW	WH

Part Numbers: Non-Booted 8-4646ST6-YY-XXX
Booted 8-4545ST6-YY-XXX
"YY" represents your color preference

RJ45/110 Assemblies

These 568B wired 110 style patch cables are used to connect a 110 wiring block to an RJ45 patch panel. BS Cable custom makes these cords to length in the USA and guarantees their quality.

Stock Lengths in ft.: 1, 2, 3, 5, 7, 10, 14, 15, 20, 25, 50, 75, & 100

Options:

Connector 1	Connector 2
RJ45	1 Pair 110 (Gray jacket color only)
	2 Pair 110 (Gray jacket color only)
	4 Pair 110 (See below table for jacket color options)

Jacket colors based on availability and compatibility:

GY	BK	BL	GR	OR	PK	VI	RD	YW	WH



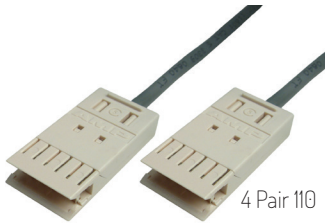
Part Numbers: Please call for part numbers



110/110 Assemblies

These 568B wired 110 style patch cables are used to connect two 110 wiring blocks. BS Cable custom makes these cords to length in the USA and guarantees their quality.

Stock Lengths in ft.: 1, 2, 3, 5, 7, 10, 14, 15, 20, 25, 50, 75, & 100

1 Pair 1102 Pair 1104 Pair 110

Options:

Connector 1	Connector 2
1 Pair 110 (Gray jacket color only)	1 Pair 110 (Gray jacket color only)
2 Pair 110 (Gray jacket color only)	2 Pair 110 (Gray jacket color only)
4 Pair 110 (See below table for jacket color options)	4 Pair 110 (See below table for jacket color options)

Jacket colors based on availability and compatibility:

GY	BK	BL	GR	OR	PK	VI	RD	YW	WH

Part Numbers: Please call for part numbers

RJ45/S210 Assemblies

These 568B wired S210 style patch cables are used to connect a Siemon S210 wiring block to a RJ45 patch panel. BS Cable custom makes these cords to length in the USA and guarantees they meet/pass Cat6 requirements.

Options:

Connector 1

RJ45

Connector 2

1 Pair S210

(Gray jacket color only)

4 Pair S210

(See below table for jacket color options)

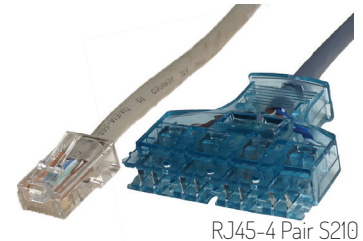
Jacket colors based on availability and compatibility:



Part Numbers: Please call for part numbers



RJ45-1 Pair S210



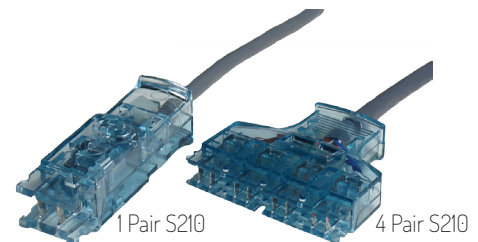
RJ45-4 Pair S210

S210/S210 Assemblies

These 568B wired S210 style patch cables are used to connect two Siemon S210 wiring blocks. BS Cable custom makes these cords to length in the USA and guarantees they meet/pass Cat6 requirements.



1 Pair S210



4 Pair S210

Options:

Connector 1

1 Pair S210

(Gray jacket color only)

4 Pair S210

(See below table for jacket color options)

Connector 2

1 Pair S210

(Gray jacket color only)

4 Pair S210

(See below table for jacket color options)

Jacket colors based on availability and compatibility:



Part Numbers: Please call for part numbers

RJ11/RJ12 Patch Cords

These cords are used mainly in voice only applications. BS Cable stocks the standard varieties and also has the ability to make them in custom lengths or pin-outs.

Options:

Connectors

RJ11 4P4C

RJ12 6P6C

Cable

Silver Satin 4/C

(Gray jacket color only)

Silver Satin 6/C

(Gray jacket color only)

Cat 3

(Gray jacket color only)

Cat 5

(See below table for jacket color options)

Wiring

Straight Through

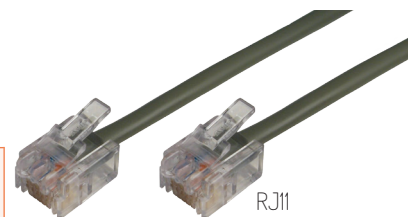
Crossover

Rollover

Jacket colors based on availability and compatibility:



Part Numbers: Please call for part numbers



RJ11



RJ12



Telco Assemblies

BS Cable can build a wide array of telco assemblies in custom lengths to your customer's specifications. Our relationships with leading cable suppliers in the United States allows us to build a quality product at a cost effective price.

- Our standard lead time on Telco orders is 3 days
- All assemblies are fully tested for continuity
- Availability of PVC, Plenum, Riser, and Halogen free jacket styles

Cat3 Telco Assemblies

Cat3 25 pair telco assemblies are used for voice and minimal data applications. 100% tested and fully TAA/BAA compliant. BS Cable exclusively uses Comtran 25 Pair Category 3 cables. These assemblies are UL listed and made in the USA at custom lengths in the following options:

Options:	Cable	Jacket	Tyco Connectors	Hood
	25 Pair	PVC	Male	90 Degree
	50 Pair	Plenum	Female	120 Degree
	100 Pair			180 Degree
	200 Pair			270 Degree
	300 Pair			(Reverse Entry)

Part Numbers: Please call for part numbers



Cat5 Telco Assemblies

Cat5 25 pair cables are designed to support both backbone and horizontal applications. Our Cat5 25 Pair saves time and money on installations between wiring cabinets and multiple work area points.

Features:

- Systimax 50 position 525 connectors
- Lucent/Avaya machine terminated
- 100% tested
- Fully BAA and TAA compliant
- Made in the USA

Options:	Cable	Jacket	Tyco Connectors	Hood
	25 Pair	PVC	Male	90 Degree
	50 Pair	Plenum	Female	120 Degree
	100 Pair			180 Degree
	200 Pair			(Reverse Entry)
	300 Pair			

Part Numbers: Please call for part numbers



Hydra Telco Assemblies

BSC offers a wide variety of hydra assemblies custom built, here in the USA. These are 100% tested and guaranteed to meet or exceed EIA/TIA specifications. Features: custom breakout options, mesh sleeving or PVC Tubing for leg protection, and fully BAA or TAA compliant.



Options:	Connector End A	Connector End B	Breakout	Legs	Wiring	Cable
	25 Pair Cat3 90 Degree Male	RJ11 (6P4C)	12 Inch Legs	6	USOC 2 Wire	Cat3
	25 Pair Cat3 90 Degree Female	RJ12 (6P6C)	18 Inch Legs	8	USOC 4 Wire	Cat5e
	25 Pair Cat5e 90 Degree Male	RJ45 (8P8C)	24 Inch Legs	12	USOC 6 Wire	
	25 Pair Cat5e 110 Degree Male Left Exit		36 Inch Legs	24	568A	
	25 Pair Cat5e 110 Degree Male Right Exit		Staggered Legs	25	568B	
	25 Pair Cat5e 180 Degree Male				10 Base T	
	25 Pair Cat5e 90 Degree Female					
	RJ11 (6P4C)					
	RJ12 (6P6C)					
	RJ45 (8P8C)					
	Open Ended					

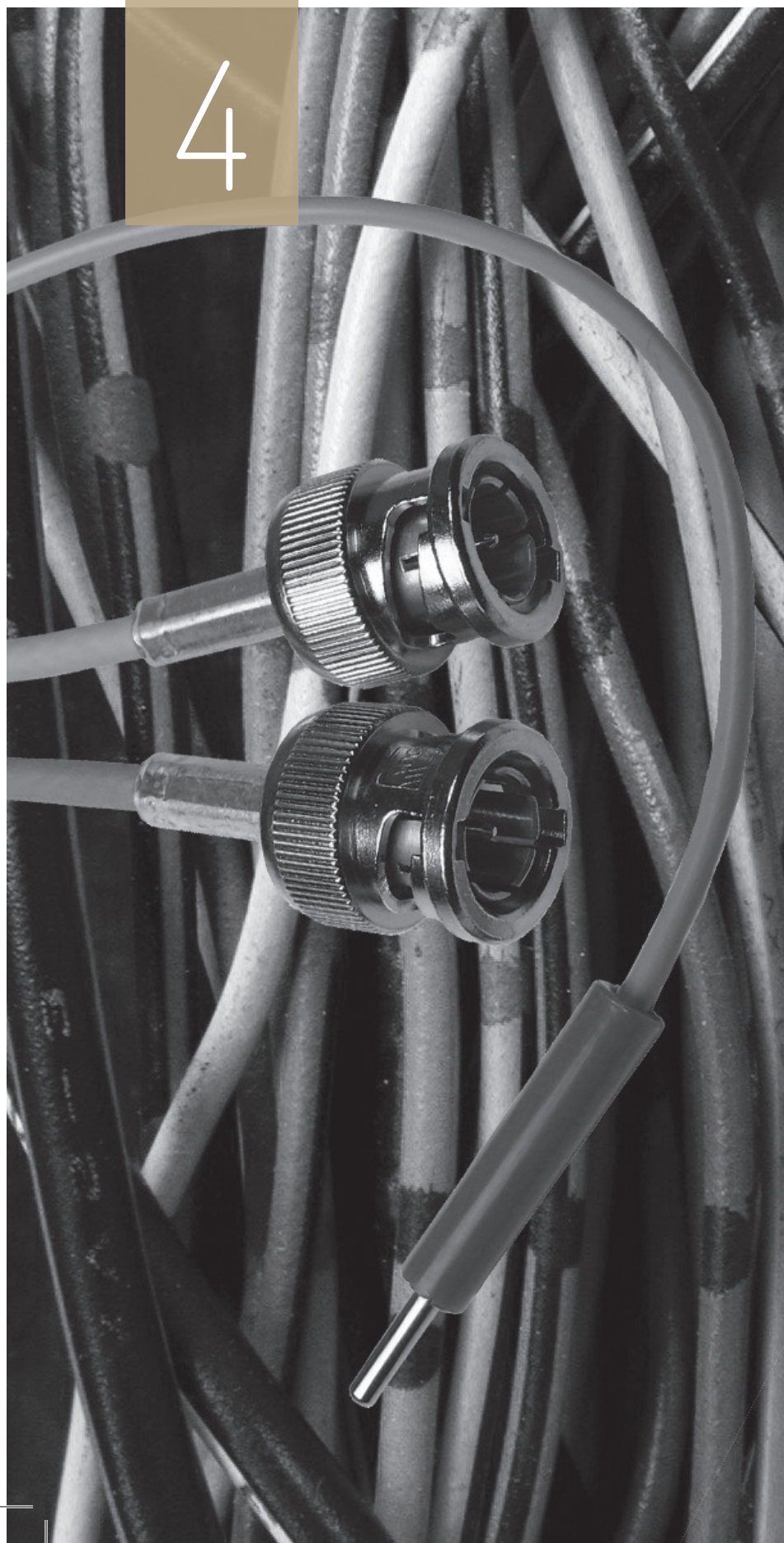
Part Numbers: Please call for part numbers

RF Cable Assemblies

Used for a variety of wireless applications, BS Cable's RF assemblies are only built in the USA with quality material and production techniques.

Features:

- Certified in-house solder/crimp instructors
- Ability to sweep test
- Tested 100% for continuity



LMR - Communication Coax Cable Assemblies

Options:	Connector End	Connector Style	Gender	Polarity	Cable	Cable Style	Orientation
	BNC	Solder	Male	Standard	195	Standard	90 Degree
	UHF	Crimp	Female	Reversed	200	Plenum	180 Degree
	7/16				240	Direct Burial	
	MCX				300		
	MMCX				400		
	SMA				500		
	SMB				600		
	TNC				900		
	N						

Part Numbers: Please call for part numbers



BNC Jack (Female) Small



BNC Plug (Male) Small



F Jack (Female) Small



F Plug (Male) Small



RP-SMA Jack (Female) Small



RP-SMA Plug (Male) Small



RP-TNC Plug (Male) Small



UHF Plug (Male) Small



SMA Plug (Male) Small



SMA Jack (Female) Small



N-Male Small



N Jack (Female) Small



SMB Plug (Male) Small



TNC Plug (Male) Small

DS3 Interconnect Assemblies 734/735 BNC Male/Male

A Digital Signal 3 (DS3) is a digital signal level 3 T-carrier. It may also be referred to as a T3 line. BS Cable makes all of our DS3 assemblies with true 75-ohm coaxial cable and BNC's. Type 735A 26 AWG is used for interconnects up to 225 feet. Type 734A 20 AWG is used for interconnects up to 450 feet.

Options:		Jacket Type	Tracer Option
	735 1/C	PVC/Plenum	With/Without
	7352 2/C	PVC/Plenum	With/Without
	734A 1/C	PVC/Plenum	No Tracer
	734A 2/C	PVC	No Tracer

Part Numbers: Please call for part numbers



A/V Assemblies & Electronics

BS Cable's A/V connectivity and conversion products offer dependable and affordable solutions for your customer. All of these products have been rigorously tested by our ISO certified QC department.

Whether you need a standard HDMI cable or a custom made HD/SDDI cable, BS Cable has you covered. We keep thousands of configurations on the shelf and can ship stock items the same day.

5



Dual RCA

Male/Male (Red & White) for audio only.

Stock Lengths in ft.: 6, 12, 25, 50, 75, & 100

Available in custom lengths with PVC or plenum type jacket.

Part Numbers:	Stock Lengths	8-2115-XXX
	PVC Custom Lengths	R2115-XXX
	Plenum Custom Lengths	R2115P-XXX



Triple RCA

Male/Male (Red, White, & Yellow) for audio and composite video.

Stock Lengths in ft.: 3, 6, 12, 18, 25, 50, & 75

Available in custom lengths with PVC or plenum type jacket.

Part Numbers:	Stock Lengths	8-2125-XXX
	PVC Custom Lengths	R2125-XXX
	Plenum Custom Lengths	R2125P-XXX



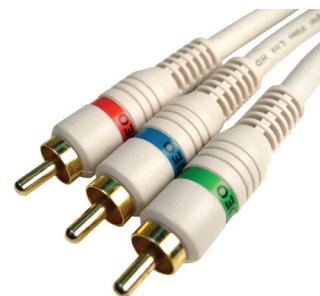
Component Triple RCA

Male/Male (Red, Green, & Blue) for RGB component video only.

Stock Lengths in ft.: 3, 6, 12, 25, 50, & 100

Available in custom lengths with PVC or plenum type jacket.

Part Numbers:	Stock Lengths	8-370-XXX
	PVC Custom Lengths	R370-XXX
	Plenum Custom Lengths	R370P-XXX



5x RCA Audio/Component Video

Male/Male (Red, Green, & Blue - Video) (Red & White - Audio) for RGB component video and audio.

Stock Lengths in ft.: 3, 6, 12, 25, 50, & 100

Available in custom lengths with PVC or plenum type jacket.

Part Numbers:	Stock Lengths	8-2155-XXX
	PVC Custom Lengths	R2155-XXX
	Plenum Custom Lengths	R2155P-XXX



HDMI V1.4 Compliant

HDMI (High-Definition Multimedia Interface) is the first and only industry-supported, uncompressed, all-digital audio/video interface. BS Cable stocks the latest V1.4 compliant cables to meet all of your client's needs.

Supports: 720p, 1080i, 1080p, 4k, & 3-D

Ethernet channel enabled

Stock Lengths in ft.: 1, 3, 6, 10, 15, 20, 25, 30, 35, 50, 75, & 100

Available in custom lengths with PVC or plenum type jacket.

Part Numbers: PVC Stock Lengths 8-HDMIMM1.4-XXX
 Plenum Stock Lengths 8-HDMIMM/P-XXX
 PVC Custom Lengths RHDIMM1.4-XXX
 Plenum Custom Lengths RHDIMM1.4P-XXX



USB 2.0 Over C5e/C6

These USB 2.0/Modular converters allow you to extend the USB signal (normally limited to 15ft.) up to 132 ft. If running in a plenum space, BS Cable can build the required plenum category patch cords to any length desired.

Includes:

- (1) RJ45 F/USB A Male 6" Adapter
- (1) RJ45 F/USB A Female 6" Adapter

Part Numbers: PVC Custom Lengths 11-RJ45USBAM-XXX



HDMI to SVGA Female/Female Converter

When connecting VGA to HDMI you must use a converter that changes the VGA signal (analog) to the HDMI signal (digital). Our converters can be kitted with our HDMI and VGA cables to provide custom solutions.

Includes:

- (1) Adapter box: HDMI F/VGA with 3.5mm F for audio
- (1) DC Power Adapter: Not required

Part Numbers: 11-HDMI/SVGA-XXX



XLR Connector

The XLR connector is a style of electrical connector, primarily found on professional audio, video, and stage lighting equipment.

Options:	3 Pin	5 Pin
	Audio or Power	Male or Female
	Male or Female	

Part Numbers: Please call for part numbers



3.5mm Stereo Male/Male

3.5mm Male/Male stereo cords are typically used to interconnect audio devices such as speakers.

Stock Lengths in ft.: 6, 12, 25, & 50

Available in custom lengths with PVC or plenum type jacket.

Part Numbers:	Stock Lengths	8-2500-XXX
	PVC Custom Lengths	R2500-XXX
	Plenum Custom Lengths	R2500P-XXX



3.5mm Stereo Male/Female

3.5mm Male/Female stereo cords are typically used to extend an existing Male/Male 3.5mm audio cord.

Stock Lengths in ft.: 6, 12, 25, & 50

Available in custom lengths with PVC or plenum type jacket.

Part Numbers:	Stock Lengths	8-2501-XXX
	PVC Custom Lengths	R2501-XXX
	Plenum Custom Lengths	R2501P-XXX



Toslink/Toslink Audio Cable

Toslink cords utilize plastic fiber optics to send digital audio signals, typically used in home entertainment equipment

Stock Lengths in ft.: 6, 12, 25, & 50

Part Numbers:	Stock Lengths	8-T0S/T0S-XXX
---------------	---------------------	---------------



VGA/BNC Male/Male

BS Cable's VGA to 5 BNC breakout cables are perfect for transmitting a computer presentation to a projector or plasma monitor. Composed of 5 mini coax cables, terminated 75ohm female BNC connector on one end and HD15 connector on the other.

Stock Lengths in ft.: 1, 3, 6, 10, 15, 25, & 50

Available in custom lengths with PVC or plenum type jacket.

Part Numbers:	Stock Lengths	8-405-XXX
	PVC Custom Lengths	D405-XXX
	Plenum Custom Lengths	D405P-XXX



SVGA Male/Male

Male/Male VGA's are typically used to connect device to device. Such as a computer tower to a monitor.

Stock Lengths in ft.: 3, 6, 10, 15, 25, 50, 75, & 100

Available in custom lengths with PVC or plenum type jacket.

Part Numbers: Stock Lengths 8-402-XXX
PVC Custom Lengths DSVGA1050-XXX
Plenum Custom Lengths DSVGA1050/P-XXX



SVGA Male/Female

Male/Female VGA's are normally used to extend an existing Male/Male VGA cord.

Stock Lengths in ft.: 3, 6, 10, 15, 25, 50, 75, & 100

Available in custom lengths with PVC or plenum type jacket.

Part Numbers: Stock Lengths 8-401-XXX
PVC Custom Lengths DSVGA1051-XXX
Plenum Custom Lengths DSVGA1051/P-XXX



SVGA Male/Male with 3.5mm Audio

BS Cable's VGA cords with 3.5mm plugs allow you to run one cable for both audio and video at the same time.

Stock Lengths in ft.: 3, 6, 10, 15, 25, 50, 75, & 100

Available in custom lengths with PVC or plenum type jacket.

Part Numbers: Stock Lengths 8-402/AUD-XXX
PVC Custom Lengths DSVGA/AUD-XXX
Plenum Custom Lengths DSVGA/AUDP-XXX



BNC Male/Male RG59U 75ohm PVC

These BNC cables are commonly found on professional video connections. Other applications include amateur radio antenna connections, aviation electronics, and electronic test equipment.

Stock Lengths in ft.: 3, 6, 12, 25, & 50

Available in custom lengths with PVC or plenum type jacket.

Part Numbers: Stock Lengths 8-1702-XXX
PVC Custom Lengths R1702-XXX
Plenum Custom Lengths R1702P-XXX



DVI-D (Dual Link) Male/Male

Stock Lengths in meters: 1, 2, 3, 5, 7.5, & 15

Part Numbers: Stock Lengths 8-DVI-DDMM-XXX



DVI-D (Single Link) Male/Male

Stock Lengths in meters: 1, 2, 3, & 5

Part Numbers: Stock Lengths 8-DVI-DSMM-XXX



DVI-I (Dual Link) Male/Male

Stock Lengths in meters: 1, 2, 3, & 5

Part Numbers: Stock Lengths 8-DVI-IDMM-XXX



DVI-I (Single Link) Male/Male

Stock Lengths in meters: 1, 2, 3, & 5

Part Numbers: Stock Lengths 8-DVI-ISMM-XXX



DVI-A to SVGA

These DVI to SVGA cables carry an analog signal from a DVI interface to a VGA interface.

Stock Lengths in meters: 2, 3, 5, & 15

Part Numbers: Stock Lengths 8-DVIA/VGAM-XXX



DVI-D (Dual Link) to DisplayPort

These DVI to DisplayPort cables carry a digital signal from a DVI interface to a DisplayPort interface.

Stock Lengths in ft.: 3, 6, 10, & 15

Part Numbers: Stock Lengths 8-DVIMDPM-XXX



DVI-D (Single Link) to HDMI

These DVI to HDMI cables carry a digital signal from a DVI interface to a HDMI interface.

Stock Lengths in meters: 1, 2, 3, 5, 10, & 15

Part Numbers: Stock Lengths 8-DVIHDMI-XXX



HD-SDI Assemblies

These high end RG59 or RG6 coax assemblies are used for HD-SDI and SDI transmission.

Options:	Connector	Cable	Length
	BNC Male/Male	1855A Mini RG59	Custom Length
	F-Connector Male/Male	1505A RG59	
		1694A RG6	

Part Numbers: Please call for part numbers



RG6/U F-Male/F-Male PVC

These 75-ohm cables are typically used in the CATV industry for video interconnects.

Stock Lengths in ft.: 3, 6, 12, 25, 50, 75, & 100

Available in custom lengths with PVC or plenum type jacket.

Part Numbers: Stock Lengths 8-1708E-XXX
PVC Custom Lengths R1708-XXX
Plenum Custom Lengths R1708P-XXX



S-Video Male/Male PVC

S-Video cords utilize a 4-pin mini-din connector to carry an analog video signal.

Stock Lengths in ft.: 3, 6, 10, 15, 25, 50, 75, & 100

Available in custom lengths with PVC or plenum type jacket.

Part Numbers: Stock Lengths 8-360-XXX
PVC Custom Lengths J360-XXX
Plenum Custom Lengths J360P-XXX



HDMI Over C5e/C6

With these HDMI/Modular converters you can extend your High Definition video signal up to 100m over two category patch cords. This is a great solution to the traditional 100ft limitation of HDMI or when running in a plenum space, BS Cable can build you the required plenum category patch cords and kit them with this product.

Includes:

- (1) Transmit box with 2 RJ45 female ports & 1 HDMI female port
- (1) Receive box with 2 RJ45 female ports & 1 HDMI female port

Part Numbers: Extend Signal 50m 9-RJ45HDMI50
Extend Signal 60m 9-RJ45HDMI60
Extend Signal 100m 9-RJ45HDMI100M



USB & Firewire Assemblies

USB, short for Universal Serial Bus, is an industry standard developed in the mid-1990s that defines the cables, connectors, and communication protocols used in a bus for connection, and power supply between computers and electronic devices.

BS Cable stocks many options in 2.0 and 3.0 versions that are dependable and affordable.

Firewire cables are an external connector, similar to a USB port, that provides a high-speed connection between a computer and peripheral devices.

USB 2.0 Cables

USB 2.0 was released in April, 2000 and carries a max speed of 480 Mbps

Type A/A Male/Male

Stock Lengths in ft.: 3, 6, & 10

Part Numbers: Stock Lengths 8-USBAAMM-XXX



Type A/A Male/Female

Stock Lengths in ft.: 3, 6, & 10

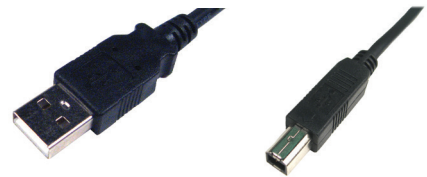
Part Numbers: Stock Lengths 8-USBAAMF-XXX



Type A/B Male/Male

Stock Lengths in ft.: 3, 6, & 10

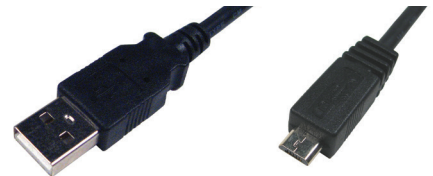
Part Numbers: Stock Lengths 8-USBABMM-XXX



Type A/Micro-B Male/Male

Stock Lengths in ft.: 3, 6, & 10

Part Numbers: Stock Lengths 8-USBABMICM-XXX



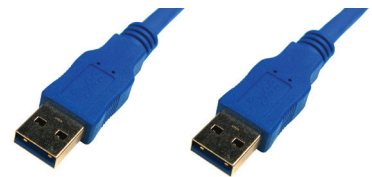
USB 3.0 Cables

USB 3.0 was released in November, 2008 and carries a max speed of 5 Gbps

Type A/A Male/Male

Stock Lengths in ft.: 3, 6, 10, & 15

Part Numbers: Stock Lengths 8-USBAAMM3-XXX



Type A/A Male/Female

Stock Lengths in ft.: 3, 6, 10, & 15

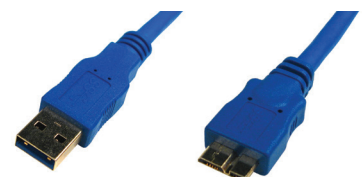
Part Numbers: Stock Lengths 8-USBAAMF3-XXX



Type A/B Male/Male

Stock Lengths in ft.: 3, 6, 10, & 15

Part Numbers: Stock Lengths 8-USBABMM3-XXX



USB 3.0 Cables Continued

Type A/Micro-B Male/Male

Stock Lengths in ft.: 3, 6, 10, & 15

Part Numbers: Stock Lengths 8-USBABMICM3-XXX



Firewire Cables

Firewire cables come in 4Pin, 6Pin, and 9Pin configurations.

Male/Male 6Pin/6Pin

Stock Lengths in ft.: 1, 2, 3, & 4.5

Part Numbers: Stock Lengths 8-1394-XXX



Male/Male 4Pin/4Pin

Stock Lengths in ft.: 2 & 4.5

Part Numbers: Stock Lengths 8-139444-XXX



Male/Male 6Pin/4Pin

Stock Lengths in ft.: 1, 2, & 4.5

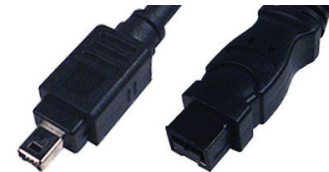
Part Numbers: Stock Lengths 8-139464-XXX



800 9Pin/4Pin

Stock Lengths in ft.: 3

Part Numbers: Stock Lengths 8-139480094-XXX



800 9Pin/6Pin

Stock Lengths in ft.: 3 & 6

Part Numbers: Stock Lengths 8-139480096-XXX



800 9Pin/9Pin

Stock Lengths in ft.: 3, 6, & 15

Part Numbers: Stock Lengths 8-139480099-XXX



Power Cords

BS Cable stocks and has the ability to manufacture all types of power cords. BS Cable's power cords are 100% UL listed and available in a wide variety of connector and cable options, stocked at our facility for fast turn around.



C13/NEMA 5-15P 10A/125V 18 AWG

Available in custom lengths with various jacket types.

Stock Lengths in ft.: 1, 2, 3, 6, 10, 15, & 25

Part Numbers: Stock Lengths 8-PWRCDS-XXX
PVC Custom Lengths Please call for part number



C15/NEMA 5-15P 15A/125V 14 AWG

Available in custom lengths with various jacket types.

Stock Lengths in ft.: 1, 3, 6, 10, & 15

Part Numbers: Stock Lengths 8-PWRC15N515P-XXX
PVC Custom Lengths Please call for part number



3 Slot-Notebook 10A/125V 18 AWG

Available in custom lengths with various jacket types.

Stock Lengths in ft.: 3, 6, 10, & 15

Part Numbers: Stock Lengths 8-PWRCDNB-XXX
PVC Custom Lengths Please call for part number



2 Slot-Notebook 10A/125V 18 AWG

Available in custom lengths with various jacket types.

Stock Lengths in ft.: 1, 3, 6, 10, & 15

Part Numbers: Stock Lengths 8-PWRCDNB2-XXX
PVC Custom Lengths Please call for part number



C13/C14 10A/250V 18 AWG

Available in custom lengths with various jacket types.

Stock Lengths in ft.: 1, 2, 3, 6, 10, & 15

Part Numbers: Stock Lengths 8-PWRCDEX250-XXX
PVC Custom Lengths Please call for part number



C13/C14 15A/300V 14 AWG

Available in custom lengths with various jacket types.

Stock Lengths in ft.: 1, 2, 3, 6, 10, & 15

Part Numbers: Stock Lengths 8-PWRCDEX14-XXX
PVC Custom Lengths Please call for part number

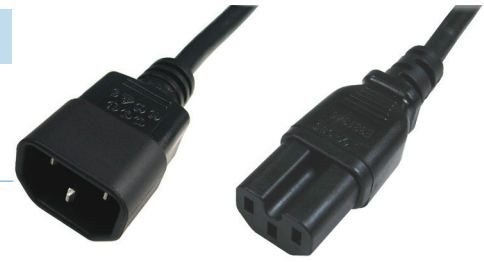


C14/C15 14 AWG

Available in custom lengths with various jacket types.

Stock Lengths in ft.: 1, 2, 3, 6, 10, & 15

Part Numbers: Stock Lengths 8-PWRC14C15-XXX
PVC Custom Lengths Please call for part number



C19/C20 12 AWG

Available in custom lengths with various jacket types.

Stock Lengths in ft.: 1, 2, 3, 6, 10, & 15

Part Numbers: Stock Lengths 8-PWRC19C20-XXX
PVC Custom Lengths Please call for part number



D-Sub Serial Assemblies

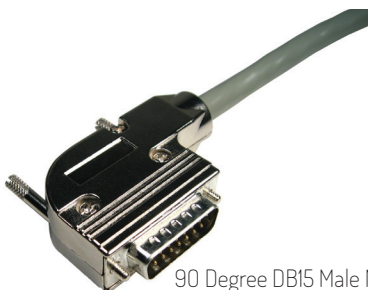
D-Sub Cables, used for a variety of control applications, have been built by BS Cable since we started our business over 30 years ago. Since we've been manufacturing them for so long, we have a great amount of raw material in stock to get your customer quality assemblies in a hurry. These are 100% tested for continuity before shipping.



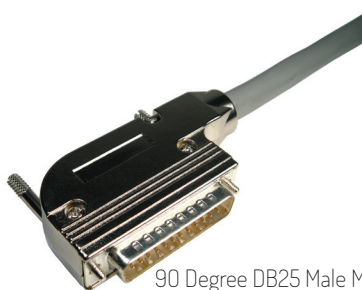
Custom D-Sub Assemblies



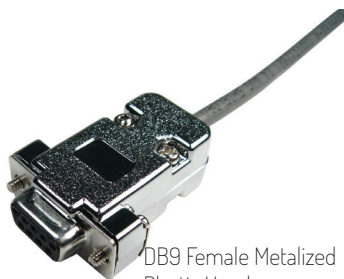
90 Degree Male DB9 Ribbon



90 Degree DB15 Male Metal Hood



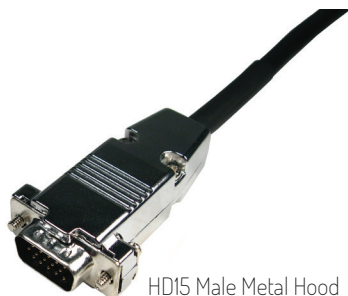
90 Degree DB25 Male Metal Hood



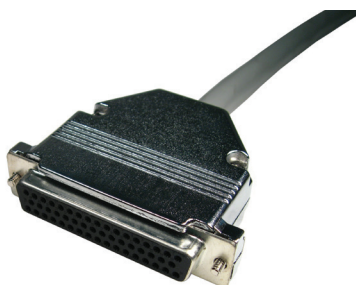
DB9 Female Metalized Plastic Hood



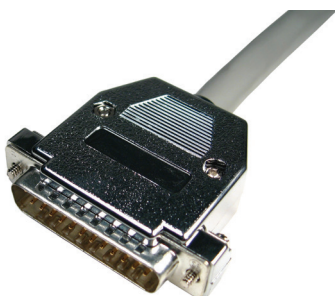
DB9 Male Metal Hood



HD15 Male Metal Hood



DB50 Female Metal Hood



DB25 Male Metalized Plastic Hood



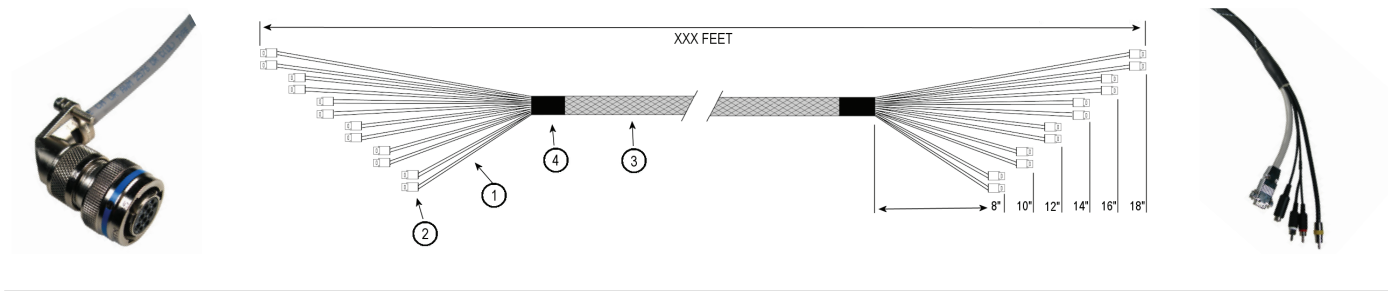
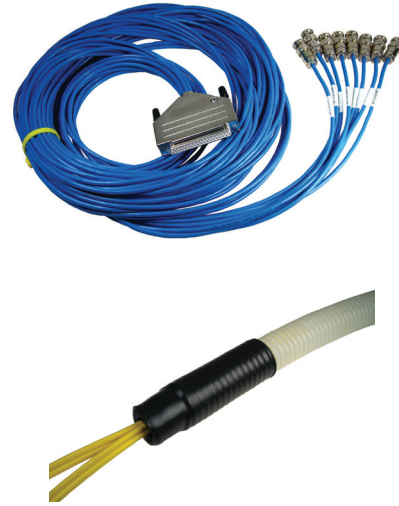
DB37 Male Metalized Plastic Hood

Options:	Connector	Gender	Cable	Pin	Hood	Pinning
	DB09	Male	Ribbon	Solder	Metal	Custom Pinning
	DB15	Female	Low-Cap	Crimp	Metalized Plastic	
	DB25					
	DB37					
	DB50					
	HD15					

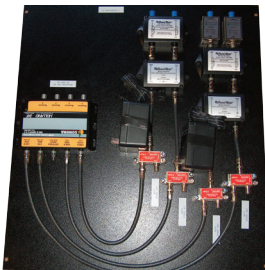
Part Numbers: Please call for part numbers

Custom Assemblies

BS Cable is an accredited quality custom cable manufacturer and is able to meet any requirements and/or specific requests.



Our product lines are not limited to the standard assemblies built by most manufacturers. Rather, we use our seasoned sales staff and product engineers to create the custom solutions your customer needs.



BS Cable is able to:

Translate customer “ideas” into project specific assemblies, create PDF specifications based on customer’s application and needs, produce a sample for approval, and finally, build the requested assemblies with the quality we are known for.

Custom Assembly Types Available:

- Whether you need specific lengths, brand names, breakouts, material types, or custom packaging & labeling, we have you covered.
- Custom Copper Capabilities include but are not limited to:
 - Category Cabling
 - Coax
 - Multi-Pair
 - Custom Harness Assemblies
 - RF Assemblies
 - Power Cabling
 - Ribbon Cables
 - D-Subs
 - Audio/Video
 - Military Spec Assemblies



Value Added Services:

- Custom labeling - serialization or bar code
- Custom packaging
- Cable bundling - zip ties, mesh, Velcro
- Cable kitting

• *Relentless Until A Solution Is Found* •

Index

110/110 Assemblies	2-5	Outdoor 2 Fiber Low Smoke Halogen Armored..	1-12
28 AWG Cat6 Patch Cords	2-1	Plastic Optical Fiber Cables	1-13
2 Slot-Notebook 10A/125V 18 AWG	7-1	RG6/U F-Male/F-Male PVC	5-6
3.5mm Stereo Male/Female	5-3	RJ11/RJ12 Patch Cords	2-6
3.5mm Stereo Male/Male	5-3	RJ45/110 Assemblies	2-5
3 Slot-Notebook 10A/125V 18 AWG	7-1	RJ45/S210 Assemblies	2-6
5x RCA	5-1	Ruggedized Compact Fanout Kit	1-13
BNC Male/Male RG59U 75ohm PVC	5-4	S-Video Male/Male PVC	5-6
C13/C14 10A/250V 18 AWG	7-1	S210/S210 Assemblies	2-6
C13/C14 10A/300V 14 AWG	7-1	Simplex Drop Cable Low Smoke Halogen	1-12
C13/NEMA 5-15P 10A/125V 18 AWG	7-1	SVGA Male/Female	5-4
C14/C15 14 AWG	7-2	SVGA Male/Male	5-4
C15/NEMA 5-15P 15A/125V 14 AWG	7-1	SVGA Male/Male with 3.5mm Audio	5-4
C19/C20 12 AWG	7-2	T1 Assemblies	2-3
Cat3 Telco	3-1	Toslink/Toslink Audio Cable	5-3
Cat5 Telco	3-1	Triple RCA	5-1
Cat5e 350Mhz Imported Patch Cords	2-4	Uniboot Fiber Assemblies	1-7
Cat5e 350Mhz TAA Compliant Patch Cords	2-2	USB 2.0 Cable Type A/A Male/Female	6-1
Cat6 550Mhz Imported Patch Cords	2-4	USB 2.0 Cable Type A/A Male/Male	6-1
Cat6 550Mhz TAA Compliant Patch Cords	2-2	USB 2.0 Cable Type A/B Male/Male	6-1
Cat6a 600Mhz Patch Cords	2-3	USB 2.0 Cable Type A/Micro B Male/Male	6-1
Component Triple RCA	5-1	USB 2.0 Over C5e/C6	5-2
Corning Gold Fiber Assemblies G Series.....	1-1, 1-2	USB 3.0 Cable Type A/A Male/Female	6-1
Custom D-Sub Assemblies	8-1	USB 3.0 Cable Type A/A Male/Male	6-1
Custom Multi-Fiber Trunk Assemblies	1-5, 1-6	USB 3.0 Cable Type A/B Male/Male	6-1
DS3 Interconnect Assemblies	4-2	USB 3.0 Cable Type A/Micro B Male/Male	6-2
Dual RCA	5-1	VGA/BNC Male/Male	5-3
DVI-A to SVGA	5-5	XLR Connector	5-2
DVI-D (Dual Link) Male/Male	5-5		
DVI-D (Single Link) Male/Male	5-5		
DVI-D (Dual Link) to DisplayPort	5-5		
DVI-D (Single Link) to HDMI	5-5		
DVI-I (Dual Link) Male/Male	5-5		
DVI-I (Single Link) Male/Male	5-5		
Economy-Light Line E-Series	1-4		
Fiber Pigtailed	1-8		
Firewire 800 9Pin/4Pin	6-2		
Firewire 800 9Pin/6Pin	6-2		
Firewire 800 9Pin/9Pin	6-2		
Firewire Male/Male 4Pin/4Pin	6-2		
Firewire Male/Male 6Pin/4Pin	6-2		
Firewire Male/Male 6Pin/6Pin	6-2		
T Series: TAA Compliant Fiber Jumpers	1-3		
HD-SDI Assemblies	5-6		
HDMI Over C5e/C6	5-6		
HDMI V1.4 Compliant	5-2		
HDMI to SVGA Female/Female Converter	5-2		
Hydra Telco Assemblies	3-1		
LMR Communication Coax Cable Assemblies	4-1		
Mode Conditioning	1-11		
MTP Assemblies.....	1-9		
MTP/LC Assemblies for QSFP (40g)	1-10		
OTDR Dead Zone Eliminating Launch Boxes	1-12		



BSCable.com

Toll Free: 1-800-204-0628

sales@bscable.com

334 Godshall Drive

Harleysville, PA 19438

Local: (215) 513-4000

Fax: (215) 513-4014

• *Relentless Until A Solution Is Found* •